

VAG CAN COMANDER KWP2000 CAN TP2.0

Diagnostic tool for cars from Volkswagen Audi Group which using "KWP2000-CAN TP2.0" Features:

1. Covers all electronic control units in vehicles (diagnostic addresses from 0x01 to 0x80). This can allow of user to investigate and diagnosis some new units untouchable for remaining diagnostic tools (example is new KESSY unit).



2. Manual definition of running diagnostic session - not like remaining diagnostic tools always standard diagnostic session 0x89

3. Broadcast diagnostic request - disable normal communication, clear DTCs, Logistic (transport) mode,...

4. Allows managing of brand new immobilizer units where is allowed programming of PIN, SKC, BGW, MAC.

5. Most of popular diagnostic requests - identifications, coding, adaptations, DTCs and s.o.

Special functions about instrument clusters from VDO which allows - changing of odometer value, reading security access code of immobilizer, reading eeprom and flash memory of instrument cluster.

List of vehicles covered from

- Seat Leon (2005+)
- Seat Toledo (2005+)
- Seat Altea
- Seat Altea XL
- VW Jetta (MY2006)
- VW Caddy
- VW Golf5
- VW Crossgolf
- V W Touaran
- VW EOS
- VW Individual
- VW Passat platform B6 (MY2006)
- Skoda Octavia II
- Skoda Scout
- Skoda Roomster
- Audi A3 (2003+ still with most of these cars odometer change is imposible)
- Audi A8 (2003+ still with most of these cars odometer change is imposible)

Near SW update is : Audi A6, Audi Q7, VW Phaeton, Porsche Cayenne (2005+), VW Touareg

List of vehicles covered from function security access code reading:

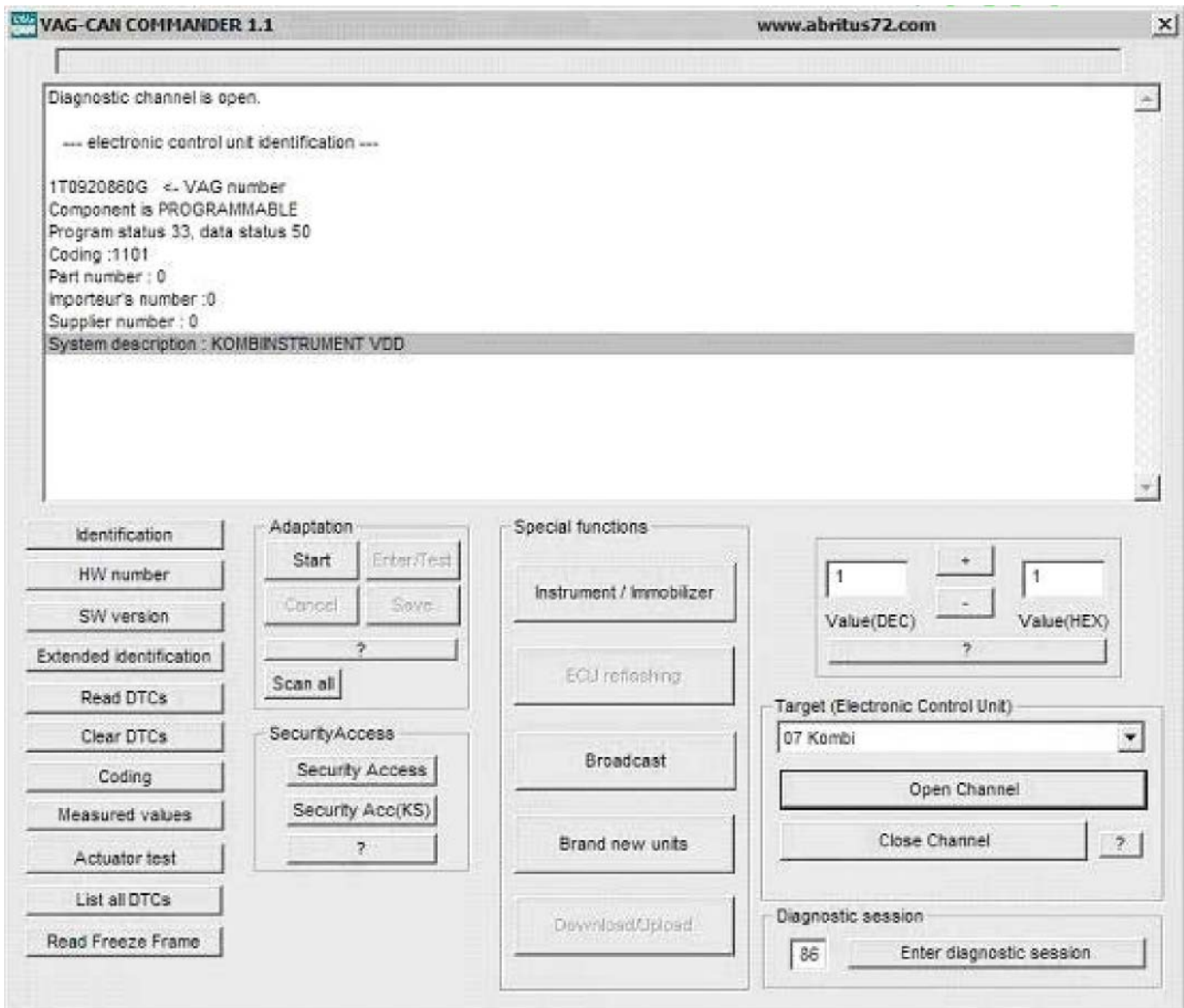
- Seat Leon (2005+)
- Seat Toledo (2005+)
- Seat Altea
- Seat Altea XL
- VW Jetta (MY2006)
- VW Caddy
- VW Golf5
- VW Crossgolf

VAG CAN COMANDER FULL

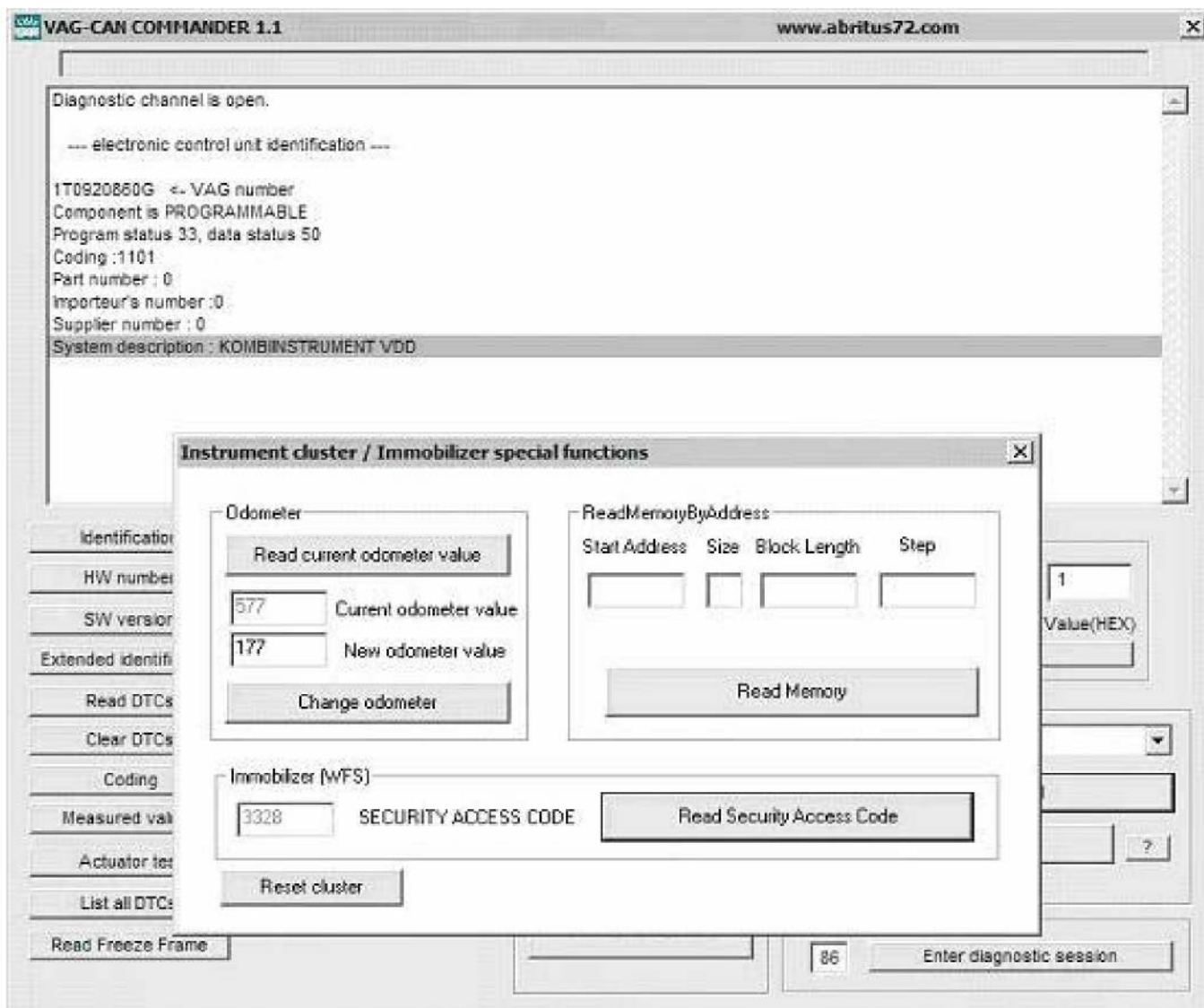
- V W Touaran
- VW EOS
- VW Individual
- VW Passat platform B6 (MY2006)
- Skoda Octavia II
- Skoda Scout
- Skoda Roomster
- Audi A3
- Audi A8

Main screen(instrument cluster session):

VAG CAN COMANDER KWP2000 CAN TP2.0



Special Functions VDO nstrument clusters



Immobilizer accepting security access code

The screenshot displays the VAG-CAN COMMANDER 1.1 software interface. The main window title is "VAG-CAN COMMANDER 1.1" and the URL "www.abritus72.com" is visible in the top right corner. The central text area shows the following diagnostic information:

```
Diagnostic channel is open.  
--- electronic control unit identification ---  
  
1T0920860G <- VAG number  
Component is PROGRAMMABLE  
Program status 33, data status 50  
Coding :0  
Part number : 0  
Importeur's number :0  
Supplier number : 0  
System description : MMO  
Key WFS OK
```

Below the text area, there are several functional panels:

- Identification:** A vertical list of buttons including "HW number", "SW version", "Extended identification", "Read DTCs", "Clear DTCs", "Coding", "Measured values", "Actuator test", "List all DTCs", and "Read Freeze Frame".
- Adaptation:** Contains buttons for "Start", "Enter/Test", "Cancel", "Save", and "Scan all".
- SecurityAccess:** Contains buttons for "Security Access" (highlighted), "Security Acc(KS)", and a question mark button.
- Special functions:** Contains buttons for "Instrument / Immobilizer", "ECU refreshing", "Broadcast", "Brand new units", and "Download/Upload".
- Value Input:** A numeric keypad with "Value(DEC)" (3328) and "Value(HEX)" (000) fields, plus "+" and "-" buttons.
- Target (Electronic Control Unit):** A dropdown menu showing "20 Wegfahrsperr" and buttons for "Open Channel" and "Close Channel".
- Diagnostic session:** A numeric keypad with "86" and an "Enter diagnostic session" button.